

Otani River / Boga River Flood Area Prediction Map

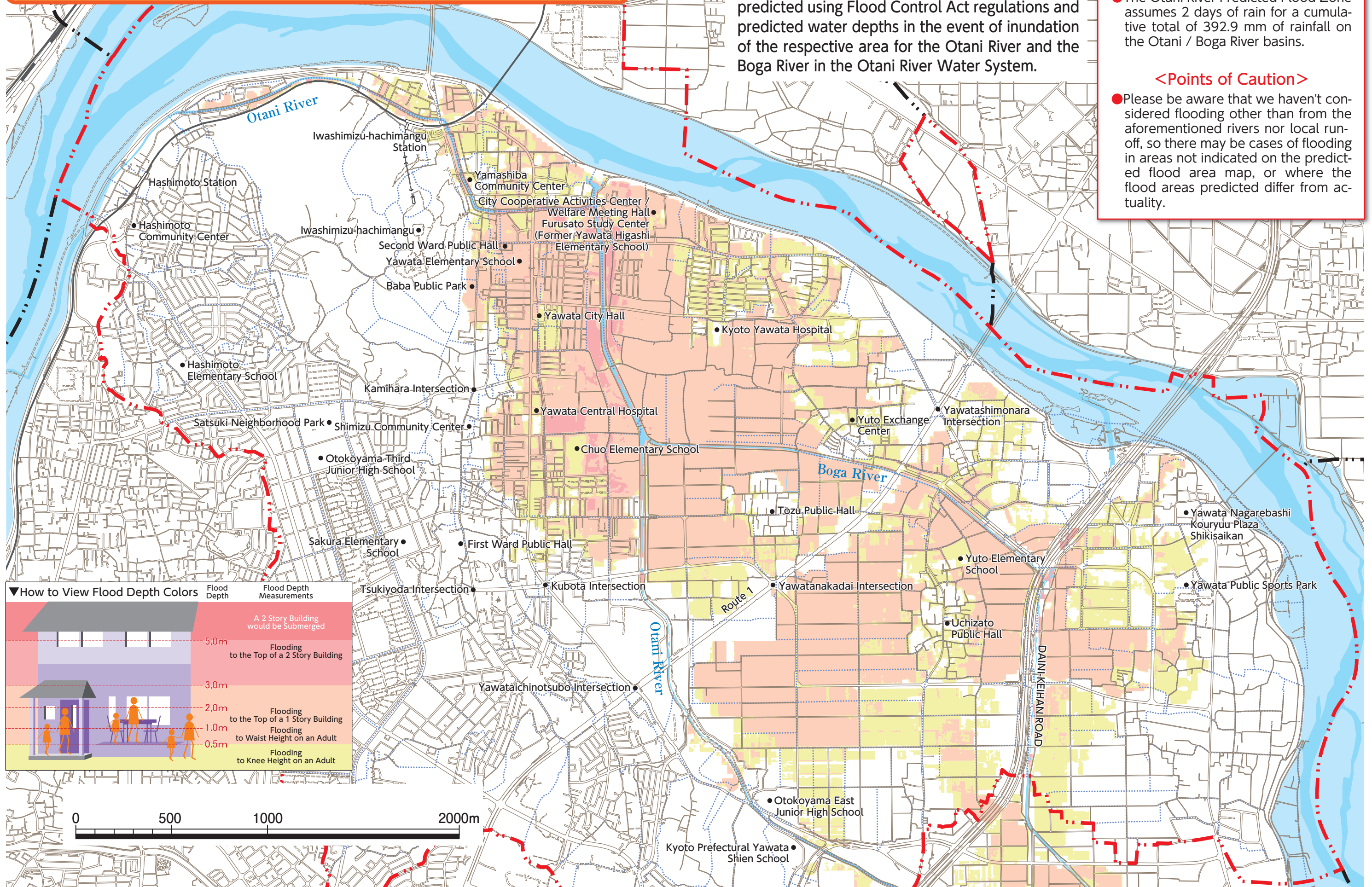
This Flood Area Prediction Map displays flood and inundation areas predicted from peak rainfall predicted using Flood Control Act regulations and predicted water depths in the event of inundation of the respective area for the Otani River and the Boga River in the Otani River Water System.

<Flood map precipitation level>

- The Otani River Predicted Flood Zone assumes 2 days of rain for a cumulative total of 392.9 mm of rainfall on the Otani / Boga River basins.

<Points of Caution>

- Please be aware that we haven't considered flooding other than from the aforementioned rivers nor local run-off, so there may be cases of flooding in areas not indicated on the predicted flood area map, or where the flood areas predicted differ from actuality.



Materials Provided by: Kyoto Prefecture Yamashiro Kita Office of Public Works