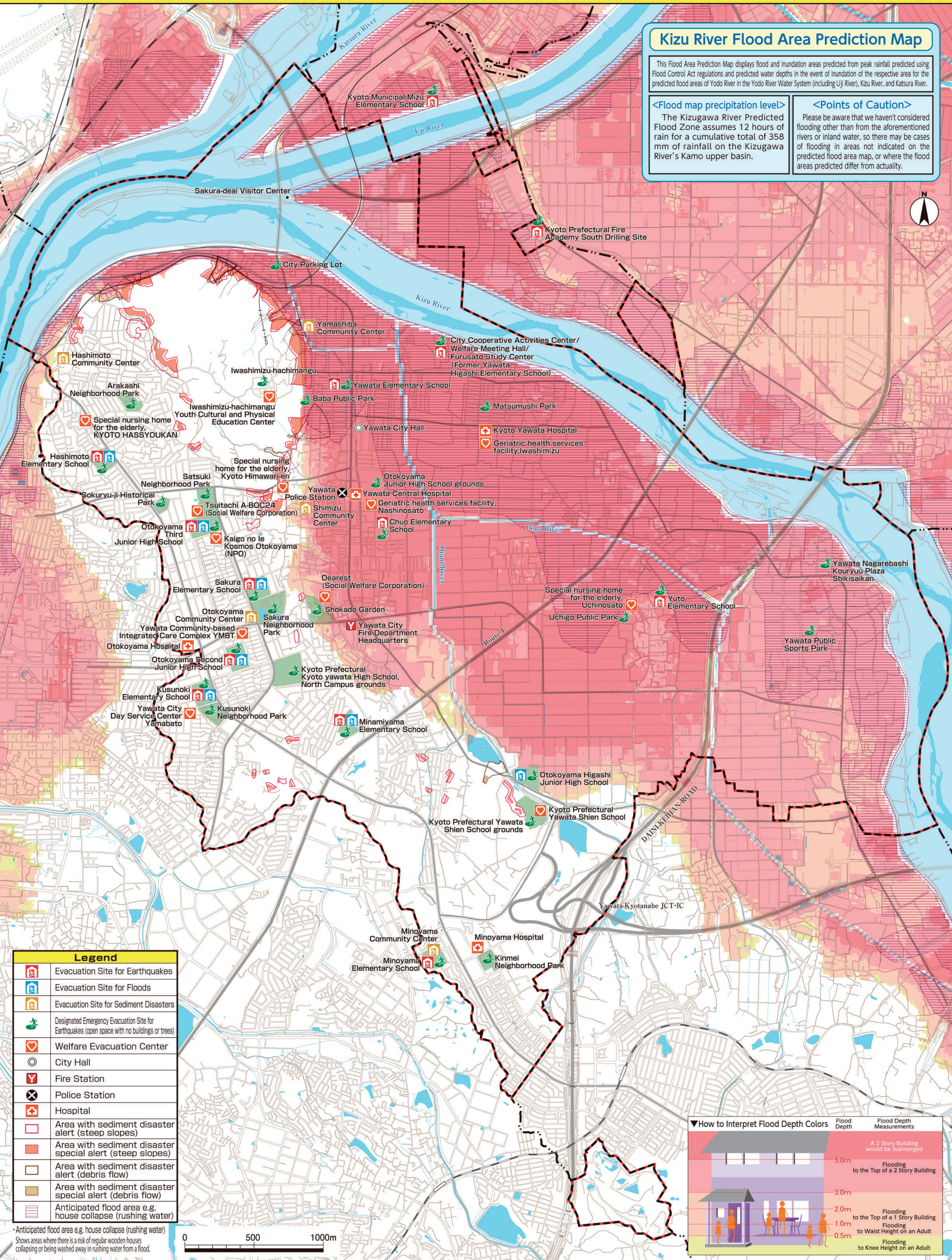


Yawata City Disaster Prevention Hazard Map



Kizu River Flood Area Prediction Map

This Flood Area Prediction Map displays flood and inundation areas predicted from peak rainfall predicted using Flood Control Act regulations and predicted water depths in the event of inundation of the respective area for the predicted flood areas of Yodo River in the Yodo River Water System (including Uji River), Kizu River, and Katsura River.

<Flood map precipitation level>

The Kizugawa River Predicted Flood Zone assumes 12 hours of rain for a cumulative total of 358 mm of rainfall on the Kizugawa River's Kamo upper basin.

<Points of Caution>

Please be aware that we haven't considered flooding other than from the aforementioned rivers or inland water, so there may be cases of flooding in areas not indicated on the predicted flood area map, or where the flood areas predicted differ from actuality.

Legend	
	Evacuation Site for Earthquakes
	Evacuation Site for Floods
	Evacuation Site for Sediment Disasters
	Designated Emergency Evacuation Site for Earthquakes (open space with no buildings or trees)
	Welfare Evacuation Center
	City Hall
	Fire Station
	Police Station
	Hospital
	Area with sediment disaster alert (steep slopes)
	Area with sediment disaster special alert (steep slopes)
	Area with sediment disaster alert (debris flow)
	Area with sediment disaster special alert (debris flow)
	Anticipated flood area e.g. house collapse (rushing water)

Anticipated flood area e.g. house collapse (rushing water)
Shows areas where there is a risk of regular wooden houses collapsing or being washed away in rushing water from a flood.

