

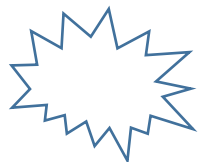
For foreign nationals who reside in Japan

Inquiries

of

Daily life

COLLECTION



Otokoyama Community Development

Partnership Committee

(Published by Yawata City)

SUSTAINABLE  
DEVELOPMENT  
GOALS

10 REDUCED  
INEQUALITIES



11 SUSTAINABLE CITIES  
AND COMMUNITIES



12 RESPONSIBLE  
CONSUMPTION  
AND PRODUCTION



16 PEACE, JUSTICE  
AND STRONG  
INSTITUTIONS



17 PARTNERSHIPS  
FOR THE GOALS



We support the Sustainable Development Goals (SDGs).

## Greetings from the city mayor

---

*Yawata welcomes everyone  
from around the world*

How is life in Yawata?

I am delighted to have you all living in our city.

You may find daily life in Japan challenging as things can be different from your country. We have published this book in hopes of helping you be more comfortable staying in Japan.

In order to build a city where everyone can be happy, we need the cooperation of each of you.



February 2021

Mayor of the City of Yawata

ほり      ぐち      ふみ      あき  
堀口 文昭

Fumiaki Horiguchi

# PROLOGUE



As the population of foreign-born people living in Japan increases, we have a growing number of inquiries regarding daily life, such as what to do about trash and noise.

“Why are Japanese upset?” “Why did the foreigner do this?”

– How can everyone be happy?

There are things that both people from around the world living in Japan and Japanese living near them should know. In this book, we will share some helpful tips for a happy neighborhood.

## How to use this book

When you are having trouble with your neighbor from a different country, you may be able to understand how others feel by reading this book. When you are having trouble with life in Japan, you may find an answer in this book.

First, let us start by getting to know each other.

*To the next page*

# INDEX



## Diversity and Japan

- 0. People get scared of me just because I am not Japanese . . . . . 1
- Special Inquiry ① Greetings from around the world . . . . . 2

## Inquiries of daily life

- 1. A neighbor told us not to talk in the hallway . . . . . 3
- 2. Someone cautioned us not to be loud in the park at night . . . . . 4
- 3. A neighbor claimed that we were being too loud . . . . . 5
- 4. A neighbor was not happy that I was cooking outside (on the balcony) . . . . . 6
- Special Inquiry ②
- The neighborhood association and the community circular . . . . . 7

## Inquiries of cleaning

- 1. Mold is growing on the Tatami in my apartment . . . . . 8
- 2. I was cleaning my apartment using water, and  
the resident below said it's leaking . . . . . 9

## Inquiries of trash

1. There are so many rules for trash, I don't know what to do . . . . . 10
  2. My neighbor was not happy that I was keeping trash for some time . . . 11
  3. Food waste I was leaving got infested with bugs . . . . . 12
  4. When I took my trash to a dumpster of a company nearby,  
they told me I couldn't do that . . . . . 13
- Special Inquiry ③ Social Media and consultation services . . . . . 14

## Japanese culture

1. Do not visit someone else's apartment through the balcony . . . . . 15
  2. There are many ways to celebrate national holidays . . . . . 16
- Special Inquiry ④ Natural disaster and where to evacuate . . . . . 17

## Rules in Japan

1. Two people riding on a bicycle is prohibited . . . . . 19
2. Trespassing on a private property is prohibited . . . . . 20
3. You must pay rent on time . . . . . 21
4. It is prohibited to butcher animals (e.g., birds) in your apartment . . . . 22



## People get scared of me just because I am not Japanese

Non-Japanese



Why do neighbors think badly of me, even though I haven't done anything wrong?

Neighbor



I am not used to seeing non-Japanese and that makes me feel insecure.

### There is nothing wrong with being a foreigner

It sure is no fun to be perceived poorly for no reason. If you have anxiety, talk to your company and peers. Talk to the landlord for any problem with apartment facilities.

#### **For those who want to know more**

Historically there haven't been many foreigners living in Japan. Some people feel insecure seeing other people that they don't know. The insecurity can be reduced if you get to know each other. It helps to greet your neighbor whenever you see them.



- Problem with apartment facilities...The water pipe busted, the toilet not flushing, etc.
- The landlord...who you rent the apartment from

# Greetings from around the world

## For anytime of the day

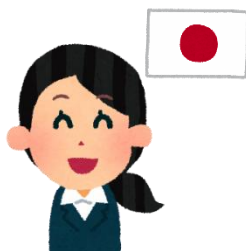
English



は ろ -  
Hello

は う あ - ゆ -      い え す の -      さ ん き ゆ -  
How are you?      Yes./No.      Thank you.

Japanese



こんにちは

げんき  
元気ですか? はい。/いいえ。      ありがとう。

Vietnamese



しん      ちゃお  
Xin Chào

こ え      こ ん      ざ      こ ん      か む      お ん  
Khỏe Không? Dạ./ Không.      Cảm ơn.

Portuguese



お ら  
Olá

てうど      べん      すいむ      なうん      おとこ      おぶりがーど  
Tudo bem?      Sim./Nao.      男 : Obrigado.  
おんな      おぶりがーだ  
女 : Obrigada.



## A neighbor told us not to talk in the hallway

Non-Japanese

I was walking down the hallway  
after work while talking to a friend.

Neighbor



I heard loud voices and walking  
noise and I cannot sleep.



### Staircases and hallways are expected to be quiet places

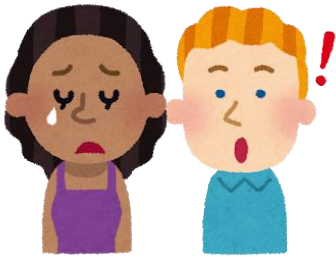
While it is not bad to talk while walking, there might be babies or someone sleeping in other apartments. Try to keep it quiet, especially in the early morning and late at night.

#### **For those who want to know more**

People in Japan tend to not make loud noises in their daily lives. What you don't think is loud may be enough to startle others. This includes, but is not limited to, using water, flushing the toilet, talking and footsteps. While noise is a normal part of daily life, it is nice to be considerate of others.

## Someone cautioned us not to be loud in the park at night

Non-Japanese



There was no one in the park, we  
thought it was okay to be loud.

Neighbor



We sleep at night.  
Please be quiet.

### Even at the park, keep it quiet at night

Even if there is no one around, the neighborhood may hear the noise. Although the park is available for anyone, loud noises in the early morning or late at night will disturb others.

#### **For those who want to know more**

Public places such as parks, stations, stores, and the other areas, are available for everyone. However, staying around for a long time or being loud without a reason is not acceptable. Be thoughtful and be mindful of others.

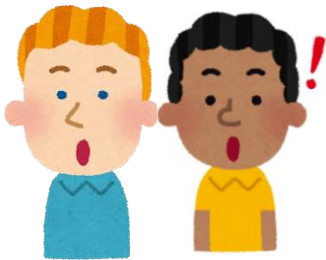
## A neighbor claimed that we were being too loud

Non-Japanese

Today is a special day for my home  
country. My friends and I were singing  
to celebrate.

Neighbor

Please enjoy your holiday  
without bothering others.



Be careful not to be too loud,  
even if you're in your apartment

While it is completely fine to celebrate special days for your country and your culture, it may startle other people as it might be different from their holidays and celebrations. Be especially mindful when listening to music, singing, and talking loudly if you have the window open.

### **For those who want to know more**

In places such as Danchi (housing complex), where many people are living in one place, it is common to have rules not to play instruments or to listen to music loudly. Make everyone more comfortable by complying with the rules.

A neighbor was not happy that I was  
cooking outside (on the balcony)

Non-Japanese

It is normal to cook outside in my  
country. Why were they upset?

Neighbor



I cannot relax with the loud  
noise and the smell.



## Cook inside the apartment

It is not common to cook outside in Japan. People may be bothered by the noise or the smell. They may also be concerned about the fire. Do not cook outside.

### For those who want to know more

Parts of the building such as balconies are called “common areas,” which means it does not belong to one person. It needs to be kept tidy at all times for use as an escape route in case of emergencies, such as typhoons, earthquakes, or fire. Additionally, food waste could attract birds and bugs and trash could clog water drainage.



## Special Inquiry ②

# The neighborhood association (Jichikai) and the community circular (Kairan-ban)



A person came from “Jichikai”  
and gave me a “Kairan-ban”.  
What is this?



A “Jichikai” (自治会) is an association of people that lives in the neighborhood. Our activities include, but are not limited to, keeping the neighborhood clean, planning festivals, and organizing emergency drills (e.g. fire safety, evacuation, soup kitchen practice).

The neighborhood  
association leader



A “Kairan-ban” (回覧板) is a letter from the Jichikai to inform the community of news around the neighborhood. While each Jichikai has different rules regarding how to pass around the Kairan-ban, passing down to the next door is common.

## Mold is growing on the Tatami in my apartment

Non-Japanese



I totally forgot to clean the Tatami,  
now it has a different color.

Wipe it down with rubbing  
alcohol (Ethanol) and let it air.

Landlord



### Open the window to let air in everyday

Tatami is something that easily molds. Make sure to let it air daily to prevent this. If it grows mold, wipe it down with rubbing alcohol.

#### For those who want to know more

Japan is surrounded by ocean; therefore, it is very humid. Humidity is how much moisture is in the air. Mold likes an environment where it's warm and humid so clean your room especially well in a warm season or after it rains.



• Ethanol ( $\text{CH}_3\text{CH}_2\text{OH}$ ) ...Rubbing alcohol used for cleaning or sanitizing.

I was cleaning my apartment using water, the resident below said it's leaking

Non-Japanese



We clean the apartment using water in my country.

Resident below



The ceiling and the walls are wet. It needs to be repaired.

Instead of using water, use a cloth or a vacuum cleaner

Japanese houses are not compatible with water cleaning. If the water leaks, the landlord or the resident below may require you to pay for the repair. Use a damp cloth or a vacuum cleaner to clean the apartment.

### For those who want to know more

Generally, the bathroom is the only room you can use water to clean in a Japanese house. If any other room gets wet, wipe it away immediately. In the event of malfunction of the facilities, let your landlord or company know and ask for a solution.



• Repair ... To restore something damaged to a good condition.

• Apartment facilities ...Water line, Windows, Walls, Bath, Toilet, Door, etc.

## Inquiries of trash

# 1

There are so many rules for trash, I don't know what to do

Non-Japanese

City officer



Why can't I throw away all of my trash together?

There are rules for how to sort the trash and when to take it out.



### Consult with your company or the city office

Trash can be sorted out into different types based on the material. Burnable, non-burnable, and recyclable are the typical examples of trash categories. Each category of trash will be picked up on a specific day of the week. Each area has different rules for separation and which type of trash is collected on which day of the week. If you have any questions, ask your company or the city office.

### For those who want to know more

In Japan, trash is collected and taken care of by the city you live in. What can be included in "burnable" or how many trash bags you can take out on each collection day varies among cities (2 bags per each household at a time in Yawata). Following the rules of recycling is what each of us can do to protect the global environment. Let's work together for a beautiful world!



· Recycle ... Convert waste into reusable material.



My neighbor was not happy that I was  
keeping trash for some time

Non-Japanese



I wasn't sure how to sort so I  
was holding onto the trash.

Neighbor



It will smell and attract bugs.

## Take out the trash every week

Holding on to the trash for a while will result in bad smells and bugs. It may not bother you, but can be a problem for others living in the neighborhood. The trash can easily go bad, especially in the warm seasons. Be sure to take out the trash on the designated day each week.

### For those who want to know more

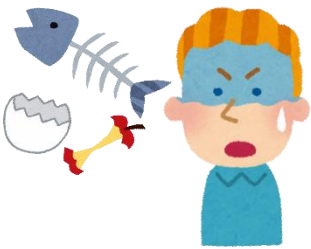
There are times you may not be able to take the trash out, such as during the New Year's holiday (from the end of December through early January). Please refer to the "garbage collection calendar" that the city provides. If you are unsure of how to sort the trash or when to take it out, consult with your company or the city office.



· Garbage collection calendar ... calendar that tells you which trash to take out on which collection day.

Food waste I was leaving got infested  
with bugs

Non-Japanese



I was keeping food waste in a  
trash bag until the trash day.

City officer



Don't let food waste sit in  
water.

Remove any water from the trash

Food waste and kitchen waste are called "Nama-gomi" (生ごみ) and they contain a lot of water. If you leave trash sitting in water, it helps the trash get rotten. Remove the water, keep the waste in a separate bag, and tie it to reduce the chance of it getting rotten and becoming infested with bugs.

**For those who want to know more**

As food waste contains a lot of water, it is heavy and likely to become rotten. It may also be too heavy for a trash bag. You can double sack to prevent it from tearing or smelling.

## Inquiries of trash

# 4

When I took my trash to a dumpster of a company nearby, they told me I couldn't do that

Non-Japanese



There are dumpsters outside that anyone can use in my country.

Company worker



Each of us should be responsible for our own trash.

## Take out the trash to a designated place

In Japan, each person is responsible for their own trash. Taking it to a non-designated place or not following the rules is called illegal dumping (fuhō-tōki; 不法投棄) and the police may become involved. If you are unsure of how to take out the trash, consult with your company or the city office.

### For those who want to know more

There is no public dumpster that anyone can use in Japan. If you see a trash can at a store, in a station, or beside a vending machine, it is only for the use of throwing away goods that were purchased there. Be sure to obey the rules.



• Crime ... An action or omission which constitutes an offence and is punishable by law.

• Vending machine ... A machine that allows to purchase small items such as food or drinks.



Special Inquiry ③

## Social Media and consultation services

Information about the city where you reside

Yawata runs official social media accounts to offer you information about local tourism, natural disasters, what's happening in the city office, and more. Don't forget to add us on Twitter, LINE, or Instagram!



Twitter

ACCOUNT  
NAME

アカウント名

八幡市 / Yawata city, Kyoto

USER NAME

ユーザー名

@yawata\_official



LINE

アカウント名

八幡市

ユーザー名

@yawata\_official



Instagram



アカウント名

yawata\_40th\_official

ユーザー名

京都府八幡市



Where you can call to talk about life in Japan in foreign language

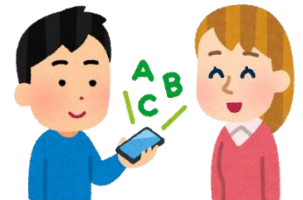
### Kyoto Prefecture Multilingual Living Consultation Service

Call: 075-343-9666

Office Hours: 10am-5pm

(Except for 2nd and 4th Tuesdays of the month, national holidays, and New Year's holiday)

Available languages: Japanese, English, Chinese, Korean, Thai, Vietnamese, Indonesian, Portuguese, and 13 other languages



Do not visit someone else's apartment through the balcony

Non-Japanese



It's faster to visit next door through balcony.

Landlord



You may fall down or break something, it's dangerous.

Use the stairs and front door no matter how far it is

The front door is for going in and out of the house. Using the balcony to visit other people's apartments may result in breaking someone else's belongings, or you falling down to the ground. In addition, someone might report it to the police thinking it seemed like a robbery.

### For those who want to know more

You cannot use the balcony to get to other places except in the case of an emergency, such as a typhoon, an earthquake, or a fire. In such cases, evacuate by breaking a board that is separating your balcony from your neighbors'. You will be charged for the repair if you break the board for non-emergency use.



· Emergency ... A serious, unexpected, and often dangerous situation requiring immediate action.

There are many ways to celebrate national holidays

In my country, we put up the national flag and celebrate with friends and family.



In Japan, having a day off from work or making a special meal to celebrate is common.



## Respect every culture

Celebrations of special days vary in each country and culture. Each person may prefer different ways to spend the holiday. Let's be mindful of others and enjoy the holiday.

### For those who want to know more

In Japan, we sometimes put up our national flag or have a special meal together with the family to celebrate national holidays. Though you may find it different seeing other countries' flags, it is nice to learn about your neighbor's homeland and their culture. Try to communicate with them regularly.



Special Inquiry ④

## Natural disaster and where to evacuate

Protect yourself and your family

Natural disasters can change your life entirely. They can cause loss of water and power, loss of your home, or cause injuries. In order to protect yourself and your loved ones' lives, learn about the common disasters in Japan and where to evacuate to in case of emergency.

### Common disasters in Japan

Earthquake · · · A massive shaking of the surface of the Earth.



It can be large and damaging enough to collapse a house or cause a tsunami, a series of extraordinarily high waves of water.

Typhoon · · · Extremely strong winds that can cause objects to fly and damage houses.



It often is accompanied with heavy rain.

Downpour · · · A pouring rain that raises the water level in the rivers and the ocean.



It can result in towns and houses flooding.

## Where to evacuate to

The act of evacuating in case of emergency is called “Hinan” (避難<sup>ひなん</sup>) and the place for evacuation is called “Hinan-Jo” (避難所<sup>ひなんじょ</sup>).

Which Hinan-Jo you should evacuate to is assigned based on where you live. Take a look at your regional hazard map.

**?** The hazard map is written through simulation and prediction of damages in case of emergency. It will tell you what can happen to which part of the town, how you should act, and which route you should take to evacuate.

### To prepare for disaster

You can access all the hazard maps for Yawata here. Also available in English. (Scroll down to the bottom to find the PDF files.)





## Two people riding on a bicycle is prohibited

Non-Japanese



I want to ride a bicycle with my friend  
when we head to work or to shops.

Police Officer



It is prohibited to ride a bicycle  
with multiple people in Japan.

### Ride a bicycle alone

#### **For those who want to know more**

There is a law which states that more than one rider cannot be on a standard bicycle. (Small children can be on a bicycle with you if they are on a dedicated seat.)

Also, it is dangerous to ride and listen to music, talk on a phone, or to be side by side with another bicycle. Drive on the left side of the road and be mindful not to cause accidents and injure yourself.

Trespassing on a private property is prohibited

Non-Japanese



The flowers and vegetables seemed so pretty, I wanted to take a closer look.

Police Officer



The fields and gardens always belong to someone. You have no right to enter without permission. It is against the law.

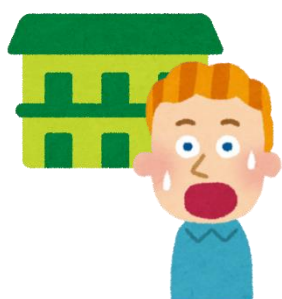
## No permission, no entry

### For those who want to know more

All land has an owner. Even if you don't see houses nearby, some people grow flowers and vegetables away from their home. Entering the property of others and taking anything away against the owner's will is a crime and will be subject to punishment.

## You must pay rent on time

Non-Japanese



I totally forgot to pay the rent!

Landlord



We cannot lease an apartment  
to people who don't pay the  
rent on time.

If you cannot make the payment on time, consult  
with your company

### For those who want to know more

If you don't pay rent by the due date, the landlord has the right to tell you to vacate the apartment. It is important to know when you have to make the payment, and how much it is. Make sure to learn these things when you rent an apartment. If you are setting up an automatic withdrawal, make sure you have enough money in your bank account. If you really cannot make the payment on time, consult with your company.



• Rent ... A payment made to a landlord, typically monthly, for the use of property or land.

• A bank account ... An arrangement made with bank that allows you to deposit and withdraw money.

It is prohibited to butcher animals  
(e.g., birds) in your apartment

(Not an example from Yawata.)

Non-Japanese

We butcher animals on our own  
to cook at home in my country.

Japanese



Any meat for cooking is  
butchered at a certain place to  
be sold at a store.



## Purchase meats from a store

### For those who want to know more

There is a law to regulate where to butcher livestock to prevent the spread of animal disease and secure the safety of foods. It is also illegal to capture animals such as birds without a legal license. Purchase meats from a store.

✚ For those of you who have limitations to certain foods

There are stores that sell halal foods. Find them online or on the map.



- A license ... A permit from an authority to own or use something, or to practice a particular behavior.
- Halal foods ... Foods that adheres to Islamic law.

## *Special Thanks to:*

---

- ◇ Kawataki Corporation
- ◇ Tsurumi Manufacturing Co., Ltd.
- ◇ Nishida Kougyo Co., Ltd.
- ◇ Fresh Co., Ltd.
- ◇ Musashino Co., Ltd.
- ◇ Yawata Police Station
- ◇ Juridical Foundation for International  
Personnel Management
- ◇ Dandan Terrace



**Otokoyama Community Development Partnership Committee**

**(Published by Yawata City)**

**February, 2021**



Kansai University, Urban Renaissance Agency, Kyoto Prefecture and Yawata City works as the Otokoyama Community Development Partnership Committee to create Otokoyama as an attractive place to move to, and continue to live in, by bringing diversity into the community.

Otokoyama welcomes all generation of people from all around the world.