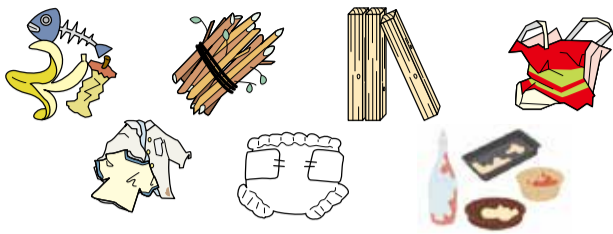


RULES FOR GARBAGE

English

Burnables

(Twice a week)



- ※ Drain kitchen waste. Recyclable plastic that cannot be washed clean are burnables.

Unburnables

(Once a week)



- ※ Wrap breakable or sharp items in paper and place them in a bag. Write “きけん” (Danger) on the bag.



Recyclable plastic

(Once a week)



- ※ The container must be empty. If dirty, wash. Items that cannot be washed clean are burnables.

How to take out burnables, unburnables, and recyclable plastic.

- Put the items in separate bags.
 - Take garbage out to the collection site.
 - Take out garbage on the appointed day and time.
- Bags must not hold over 45 L.
 - Two bags of garbage per collection
 - Take out garbage by 8 a.m.
 - Bags should be transparent or pale white. is allowed.
 - Garbage is not collected from December 31 to January 3.
 - Garbage that will not fit in a 45 L bag is a large-sized item.
 - Ask City Hall for your collection site.
 - Ask City Hall about the days to take out garbage.

Firmly tie the bag closed.



Bags should be transparent or pale white.

Only bags up to 45 L.

Two bags of garbage per collection.

Take out batteries, lighters, and lightbulbs in a separate transparent bag on the day for unburnables.



RECYCLABLES

Cans



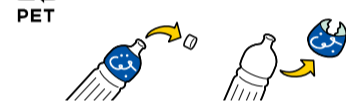
- ※ Rinse with water.

Glass bottles



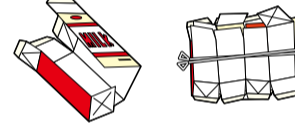
- ※ Rinse with water.

Plastic bottles



- ※ Caps and labels are plastic recyclables.
- ※ Rinse with water.

Paper cartons



- ※ Cut and unfold.
- ※ Rinse with water.

Gas canisters Spray cans



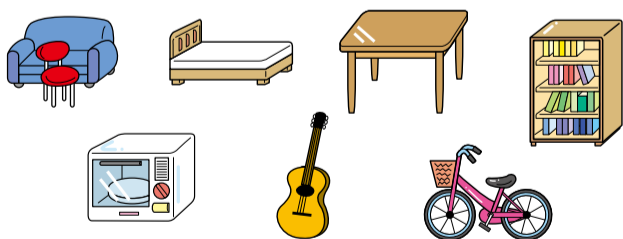
- ※ Do not poke holes.

How to take out recyclables

- Place cans, plastic bottles, and paper cartons in their respective blue nets at the collection site.
- Place glass bottles, gas canisters, and spray cans in their respective blue boxes at the collection site.
- Take out cans and paper cartons by 8 a.m. on the first and third recyclable-collection days of the month.
- Take out plastic bottles, glass bottles, gas canisters, and spray cans by 8 a.m. on the second and fourth recyclable-collection days of the month.
- Ask City Hall about the location and days to take out recyclables.

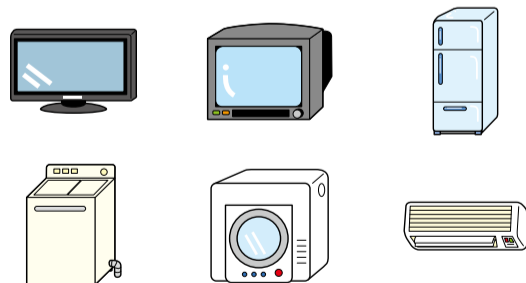
OTHER GARBAGE

Large-sized items (Pay a fee) (Items that do not fit in a 45 L bag)



- ※ Bring to City Hall. Ask City Hall if you need help bringing. Up to five items per day is allowed.

Recyclable electronics (Pay a fee)



- ※ Televisions, refrigerators, freezers, washing machines, clothes dryers, and air conditioners are recyclable electronics.

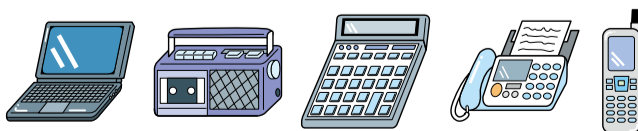
- Purchase a recycling ticket at the post office after checking the manufacturer, size, and type.
- Bring to City Hall. Ask City Hall if you need help bringing. The fee is 3,000 yen / item.

Garbage that can be collected if brought to City Hall (Pay a fee)



- ※ Car batteries 500 yen / item.
- Tires (up to four per day) 1,000 yen / item.
- Fire extinguishers 1,000 yen / item.
- Concrete blocks (up to five per day) 100 yen / item.
- Dirt, sand, etc. (up to five bags per day) 250 yen / sandbag.

Small electronics (free)



- ※ Bring to City Hall.

Garbage that cannot be collected



- ※ Work related garbage cannot be collected.